

# Stewards of the Coast and Redwoods

Preservation through Education and Restoration in  
Russian River Sector State Parks

Volume XX, Number 4, Winter 2005



## Our Treasured Volunteers!

Michele Luna, Executive Director

**O**n December 2, 2005 Stewards honored the docents and volunteers involved with the programs we support in our parks with a gala event. The annual Volunteer Celebration was attended by about 150 people. The scrumptious meal was provided by Al a Heart Catering and appetizers and desserts were made by the El Molino Culinary Arts Department. Beverages were donated by many Sonoma County wineries and Lagunitas Brewing Company. Guests were asked to wear their favorite hat and the different hats ranged from a colorful jester hat worn by Annie Cresswell to a homemade marine debris hat made by Keary Sorenson!

The Stewards Board of Directors sponsored a silent auction that raised \$1300 for Stewards supported programs. Many thanks to everyone who donated items, and also to those who purchased

gifts of photography, wine, jewelry, and much more. The festivities also included music, a slide show of our volunteers in action, and some storytelling.

Special thanks to everyone who made this special evening possible, especially our state park employees who lent a hand with pickups, in the kitchen, serving, bartending, and with cleanup.

Our docents and volunteers are the heart and soul of the work we do. It is always nice to get together to celebrate the success of our programs and our efforts to protect and preserve our state parks.



Whale Watch Docents Colleen Draffin, Mitzi Berg, and Bea Brunn at the Annual Volunteer Celebration.

### Mission Statement

Stewards of the Coast and Redwoods (Stewards) works in partnership with California State Parks to protect and interpret the natural and cultural resources of the Russian River Sector of the North Bay District.

### State Parks Supported

Armstrong Redwoods State Reserve  
Austin Creek State Recreation Area  
Sonoma Coast State Beach  
Willow Creek Watershed

### Stewards of the Coast and Redwoods

P.O. Box 2  
Duncans Mills, CA 95430  
707.869.9177  
707.869.8252 FAX  
stewards@mcn.org  
www.stewardsofthecoastandredwoods.org

### 2005 VOLUNTEER HOURS NOW DUE

**So far we only have hours for 40 out of 300 docents and volunteers!** In order to get your volunteer passes soon after the first of the year, volunteers need to send in their volunteer hours to the Stewards office. Stewards staff will compile the hours for state parks and turn them in during the first week in January.

You can email your hours to [volparks@mcn.org](mailto:volparks@mcn.org), or fax to (707) 869-8252 or mail them to P.O. Box 2, Duncans Mills, CA 95430.

Thanks very much for your help. Volunteering for 16 hours a year earns you a district-wide day use pass and for 200 hours or more you earn a statewide day use pass. Your hours also help us document the incredible support you provide in our state parks.



Keary Sorenson and his marine debris hat at the Volunteer Celebration.

## Board Members

*Ann Chambers, President*  
*Kathie Lowrey, Vice President*  
*Bill Bambrick, Secretary*  
*Jim Bray, Treasurer*  
*Rob Dickerson*  
*Rich Draffin*  
*Frederika Haskell*  
*Tom Fujiyoshi*

## Executive Director

*Michele Luna*

## Executive Assistant

*Annie Cresswell*

## Admin. Assistant

*Diane Barth*

## CAL

*Ranger Dave Horvitz*

## District Volunteer Coordinator

*Rick Royer*

## Newsletter Staff

*Michele Luna*  
*Annie Cresswell*  
*Diane Barth, editing*

## Contributors

*Ranger Dave Horvitz*  
*Ranger Jason Smith*  
*Breck Parkman*  
*Laura Parent*

## EXECUTIVE DIRECTOR'S MESSAGE

*Michele Luna, Executive Director*

With the chill of winter in the air, and the year 2005 coming to a close, I want to reflect on what Stewards has to be grateful for and our exciting plans for 2006.

### Special thanks to our Major Funders

In 2005 our programs were well funded and we were able to offer programs at no cost to school groups. The **Dean Witter Foundation** and the **Medtronic Foundation**, each of which provided Stewards with \$10,000 grants, made this possible. We also received a grant from the **Fisherman's Festival Allocation Committee** in the amount of \$2,500. **Michael Ecton and Janet Ciel**, the promoters of the Duncans Mills and Bodega festivals, provided us with beneficiary funding in the amount of \$10,380. Also this year, we received funding from **Clark Wolf Productions** in the amount of \$2,500 as beneficiary of the Russian River Food and Winefest. The **California State Parks Foundation** provided funding for Earth Day in the amount of \$3,700, and most recently a grant in the amount of \$3,000 for a regional redwood ecology guide. We also received an annual contribution from **Chevron** in the amount of \$3,000. We were also very pleased to receive a generous gift from the **Charlotte and Arthur Zitrin Foundation** in the amount of \$2,100.

### Special Projects

Stewards is very pleased to be funding two very special projects for State Parks. Funding in the amount of \$10,000 has been allocated for a Natural Resource Management Plan for Armstrong Redwoods and Austin Creek. The board has also funded a soil carbon dating project for State Park Archeologist Breck Parkman.

In 2006 we have plans to develop new exciting programs that are dependent on grant proposals currently being submitted to various funders. In response to a need to expand programs in the Willow Creek area, Stewards is proposing to develop a new Environmental Living Program (ELP) for school groups. This new program will build on other coastal programs from the standpoint of the interesting cultural history in the area. Funding will allow us to hire an Environmental Education Interpreter for the ELP program as well as other new interpretive programs in Willow Creek. Stewards is also soliciting funds to hire Mike Roa, a teacher of 37 years, to develop a comprehensive redwood ecology guide that can be used throughout the entire redwood region by teachers, docents, and outdoor educators. Additionally, Stewards is expanding the Willow Creek Citizen Action Team (CAT) to work throughout the entire Sonoma Coast unit on trail and restoration projects. Other new programs will provide docents to interpret and protect the Mammoth Rocks on Sonoma Coast, and also protect Snowy Plover nesting areas. Finally, I am very excited about beginning to work on compiling a complete cultural history of the Austin Creek area and also for Sonoma Coast State Beach. We welcome and need your participation as we proceed with these ambitious plans. Feel free to contact me, as I'd love to hear your ideas and/or put you on our list of interested docents and volunteers.

### Board Members Needed

The Stewards Board of Directors is currently looking for new board prospects with an interest in overseeing organizational policies and planning as we raise awareness and funding for our programs. Please contact me if interested. (707) 869-9177 or [mluna@mcn.org](mailto:mluna@mcn.org).

In closing, I'd like to thank you all again for your continued support and wish you and yours a blessed holiday season.

## WILDFLOWER OF THE SEASON

### Calypso Orchid, *Calypso bulbosa*

*Norman Hill, Docent*

Calypso orchids, also known as redwood orchids, usually bloom in March, and are easily identified by the unique purplish red color of their flowers, which grow singly on a 3 to 6 inch leafless stem above a single, bright green, oval leaf. The lip (lower) petal has interesting designs on it. They are most easily found under the fences in the central Picnic Area and in the field north of the entrance of the trail to the Forest Theater.

Unless you have a camera with a view finder that you can look at when it is on the ground, the flower is difficult to photograph because of the fairly short stem which is usually bent downward. Sometimes it can be photographed from below on a steep slope; there are a few calypso orchids on the lower East Ridge Trail whose pictures can be taken this way. Because the stem is very fragile, it is recommended that you not bend the flower back for picture taking.

(See Page 7 for an upcoming wildflower hike on March 11 with Norman and Joyce Bacci.)



## CAL REPORT

Ranger Dave Horvitz, Cooperating Association Liaison

On November 19th I was able to attend and take part in the Stewards of the Coast and Redwoods board retreat. This is a yearly event that helps Stewards and State Parks create a strategic plan for upcoming projects, events, activities, goals and think about ideas for the future.

After the work was done I had time to reflect on how much momentum has been generated and how much has been accomplished in the past year. I noticed a high degree of enthusiasm and was impressed by how much assistance was provided to State Parks by Stewards staff, board members and volunteers. These accomplishments could not have occurred by park staff alone. I am thankful that we have the help of many different people and volunteers to assist in achieving our collective goals.

The upcoming strategic plan is very ambitious. We will need to draw from many resources and receive assistance from many volunteers in order to accomplish our goals. I feel confident that if we continue, as exhibited last year, with renewed effort and spirit we should be successful.

Winter is the time for park staff to prepare for the upcoming summer. The way the weather has been it seems like summer is just around the corner. There should be many opportunities to become more involved in existing and new programs especially in the Willow Creek watershed.

Saturday nature walks took place at Armstrong Redwoods last summer. Many visitors appreciated the additional interpretive walks. It seemed to be unanimous that this is a great program for docents and visitors alike. Be sure to check the Stewards training schedule so you don't miss out on all the fun.

I hope everyone has a great holiday season. Don't forget to visit and enjoy the parks you help support.

## HOLIDAY SHOPPING MADE EASY

Annie Cresswell, Executive Assistant

During this time of year I am always amazed at the crowds. Where are all of these folks during the other eleven months of the year? December is the month of impossible parking, long lines, and that overwhelming feeling of rush. Well I have a secret spot that is not such a secret. There are no lines; lots of parking this time of year and my favorite part—no rush. Why not shop in a beautiful setting like Armstrong Redwoods State Reserve. Yes, you read that right. Come out and do a little holiday shopping at the Armstrong Redwoods Visitor Center and then take the opportunity to go for a nice stroll among the trees to calm your nerves and refresh your spirit.



For the outdoor person in your life we sell a great selection of books on the natural resources and cultural history of the Russian River area. One great new addition to the Visitor Center is a book by John Schubert titled *Guerneville Early Days-A History of the Lower Russian River*. This book has wonderful historic pictures of the Guerneville area and would be the perfect addition to any coffee table. For the grandparent that would like to give the gift of education to a grandchild we sell many educational toys, games and books. Our Professor Noggin games are a big hit. Kids play and learn about the natural world around them while having fun doing so.

The Armstrong Visitor Center is open 7 days a week from 11am to 3pm and is located at the front parking lot at Armstrong Redwoods State Reserve. The proceeds from sales at the Visitor Center help support *Stewards of the Coast and Redwoods*. This is another way to help support us and avoid the crowds. Don't forget—members get a 10% discount! I wish you all a happy and safe holiday season.

## GREENING OUR OFFICE PRACTICES WITH EMAIL

As many of you are aware, the way we communicate these days has changed with access to email and the internet. Stewards is looking at ways to green the way we do business and one way is to offer you our newsletter online to save on mailing costs and paper use. We would also like to create an email list to keep you updated on upcoming events or pertinent park related news.

If you would prefer receiving an electronic pdf version of our newsletter please let us know by emailing [stewards@mcn.org](mailto:stewards@mcn.org). Also, if you are interested in getting email updates from us let us know that as well. We will not share your email address with anyone else and it will be undisclosed to others on our email distribution list.

## Duck Race Donors

Softub  
Zap  
Village Inn  
Osmosis Enzyme Bath  
Russian River Outfitters  
Seaweed Cafe  
Ridenhour Inn  
Korbel Vineyards  
Main Street Station Pizza  
Lotus Kayak Rentals  
Austin Creek Readymix  
Wine Country Gases  
Windsor Golf Club  
Carlo Mascolo Landscaping

## 2005 Raffle

Bruce St. John Maher  
CazSonoma Lodge  
Clos du Bois Winery  
Country Tire  
Duncans Mills Gen. Store  
Et Cetera, Et Cetera  
Fern Grove Cottages  
Free to Travel  
Guerneville Florist  
Korbel Winery  
La Crema Winery  
Lagunitas Brewing Co.  
Matanzas Creek Winery  
Pegasus Theater  
Ravenswood Winery  
St. Francis Winery  
Sebastopol Hardware  
The Woods  
Windsor Golf Club  
ZAP

## Wine/Beer Donors

Chateau Souverain  
Clos du Bois  
De Loach Vineyards  
Korbel Champagne Cellars  
La Crema Winery  
Lagunitas Brewing Co.  
Matanzas Creek Winery  
Meeker Vineyards  
Quivira Vineyards  
Ravenswood  
Saint Francis Winery

## MAJOR DONORS

### Foundations

Fisherman's Festival  
California State Parks  
Foundation  
Dean Witter Foundation  
Medtronic Foundation  
Nat'l Fish and Wildlife  
Foundation  
Project Aware  
Sonoma County Fish and  
Wildlife Commission  
Community Foundation  
Sonoma County/Russian  
River Community Tr.  
Save the Redwoods League

### Corporations

Chevron  
Mendocino Redwood Co.  
Pacific Gas and Electric  
WestAmerica Bank

### Memorial Donors

\$500 or more  
Joan Dermody

### Osprey Circle Donors

\$500 or more  
Peggy and Churchill  
Colburn  
Claudia Lapin  
Laura Morgan  
Josephine Nattkemper  
Charlotte and Arthur Zitrin  
Foundation

### Silent Auction Prizes

Bay Nature Magazine  
Jim Bray  
Bill Dickinson  
Fern Grove Cottages  
Tom, and Marilyn Fujiyoshi  
Lanny Keyston  
Kings Sport & Tackle  
Bruce St. John Maher  
Matanzas Creek Winery  
Northwood Golf Course  
Paolini Men's Wear  
Riverside Vineyards  
Quivera Vineyards  
Saint Francis Winery  
World of Carpets  
George Zastrow  
ZAP

## WHALE WATCH

Bea Brunn, Whale Mother

Our whale watch orientation on Saturday November 5<sup>th</sup> was another success with about 50 people in attendance and about fifteen new volunteers completing the official paperwork. Several of our faithful returning volunteers unfortunately had other things going on so they could not attend, but they are definitely returning. Our Whale Watch program is one of the most popular with over seventy volunteers.

After a presentation about State Parks by Ranger Jeremy Stinson, Board Members Ann Chambers and Bill Bambrick gave us a nice presentation about Stewards and all our programs.

We then got to see our whales close up in Baja in our whale video from St. Ignacio. We are working on a possible group tour in the Spring of '06. If any of you are interested in this please contact the Stewards' office.

Then it was our Whale Mother's time to talk about whales, the migration and our fun times on the Head. Several of our volunteers added great comments and stories about their experiences. Lastly, we had our sign-up which again was very successful with our dates covered for the whole season.

We ended up at Bodega Head where lifeguard Aaron Pendergraft gave us a nice talk about ocean safety.

What a beautiful, glorious and warm day on the coast! Lots of activity everywhere with the opening of Dungeness crab season. The bird watching was also sensational, especially the flocks of fabulous white pelicans.

Thanks for all of you that helped and a special thanks to Annie who again this year supplied us with coffee and all kinds of goodies.

Start the New Year off with a visit to Bodega Head any Saturday or Sunday from noon to about 4 p.m. to experience the migration of the Pacific gray whale. It is truly one of our most exciting winter spectacles.



## BENCH DEDICATION PROGRAM

Laura Parent, Park Maintenance Worker

2005 is now almost just a memory. Reflecting back one can see many accomplishments here in Armstrong Redwoods State Reserve and Austin Creek State Recreation Area, thanks to all the volunteers who have worked on many tasks throughout the year. Your help has accomplished a lot!

One completed project this year that is noteworthy is the construction and installation of five "appreciation" resting benches along the ridge trails and in the grove.

These benches are dedicated to some of our long time "Friends of Armstrong Grove," Russ Whitman, Marcia Smith, Betty Riess, Joyce Bacci, and John Cole.

Please take an opportunity to hike our parks and use these resting benches and take in the spectacular views along the East and Pool Ridge Trails.

At this time there aren't any new bench locations available, however there are six existing benches in different locations that can be dedicated to a loved one. For more information on this donation program please contact Michele at the Stewards office or email [mluna@mcn.org](mailto:mluna@mcn.org).

We're looking forward to another successful year in 2006.



Marcia Smith's bench at the Pool Ridge trail head.

## NEW TRAIL AND STEWARDSHIP PROGRAM FOR SONOMA COAST

The Willow Creek Citizen Action Team (CAT) has been monitoring three locations on Willow Creek for water quality for the past four years. This program is now expanding to include trail and stewardship projects for the entire Sonoma Coast State Beach. State Park's staff can't keep up with the maintenance of park trails and need volunteer support. Funding is being sought to help train and outfit the expanded CAT with tools and supplies. Avid volunteer Bill Bambrick will continue to coordinate this program under the State Park leadership of Alfredo Pereyra. Volunteers who are interested in working at least one day a month should contact the Stewards office to sign up. Volunteers will also be asked to assist with projects that LandPaths is coordinating on the new Willow Creek acquisition.

# MAMMOTH ROCKS

## Rubbing Rocks, Vernal Pools, and the First Californians: Pursuing the Rancholabrean Hypothesis

Excerpts from a scientific article by E. Breck Parkman, Senior State Archaeologist, California State Parks

In 2001, I discovered what I believe to be Rancholabrean rubbing rocks on California's North Coast (Parkman 2002a, 2002b, 2002c). These are features that I believe were used for grooming by now-extinct Ice Age megafauna such as *Mammuthus columbi* and *Bison antiquus*. The rocks are located on the coast of Sonoma County about 75 km north of San Francisco, within Sonoma Coast State Beach, a unit of the California State Park System. To date, I have located six sites consisting of one or more rubbing rocks, all within an area about 4 km in diameter. The two main sites are referred to as Mammoth Rocks and Jasper Rock.

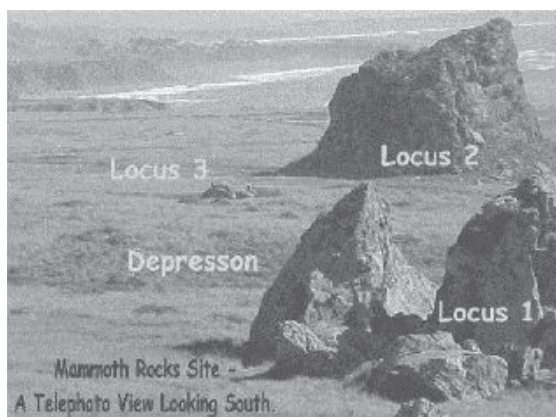
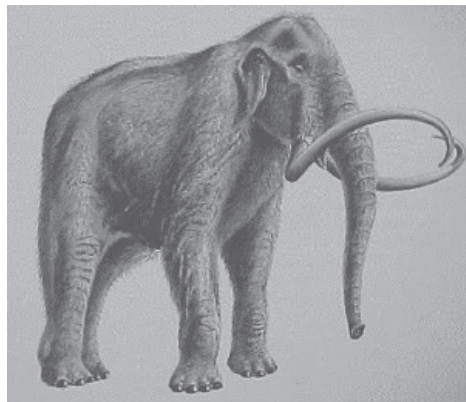


Fig. 1

The Mammoth Rocks site consists of four loci of rubbing rocks, separated by about 300 m (Fig. 1). Two of the loci consist of very large blueschist seastacks (20 and 30 m tall). The other two loci are smaller blueschist boulders (4 and 5 m tall). The four loci surround an enigmatic wetland that I believe may represent a relic animal wallow.

Jasper Rock is located 3 km south of Mammoth Rocks. This site consists of a single jasper (red chert) boulder which stands about 2.5 m tall. A shell midden (CA-SON-365/H) is located 100 m south of the boulder.

Over the past two years, I have developed what I term, "The Rancholabrean Hypothesis." Simply put, the hypothesis proposes that elements of the Rancholabrean landscape (e.g., megamamal rubbing rocks and wallows) still survive and can be detected on the contemporary landscape. Furthermore, by identifying these Pleistocene features, it may be possible to map the archaeological presence of the area's first people. Since the initial discovery of the Sonoma Coast rubbing rocks, a loose-knit team of researchers (including archaeologists, geologists, paleontologists, geomorphologists, pedologists, physicists, chemists, zoologists, botanists, and molecular biologists) have been working with me to confirm or deny the Rancholabrean Hypothesis.

### Vernal Pools as Rancholabrean Wallows

Included among California's most precious natural resources are the state's vernal pools, seasonally flooded depressions found on ancient Ice Age soils with an impermeable layer such as a hardpan or claypan. The origin of the pools has always been a bit of a mystery, and there are several theories that have been offered to explain them. During earlier times, these features in the Central Valley were often referred to perhaps derisively as "hogwallows" just as similar features were referred to as "buffalo wallows" on the Great Plains (Anonymous 1998:15). I have recently added a new theory to the mix. In 2003, I hypothesized an association between vernal pools and ancient Rancholabrean wallows (Parkman 2003b). My reasoning began with an observation at Mammoth Rocks in 2001. The site contains an unusual wetland depression which measures about 0.5 ha in size. The depression is encircled by four loci of polished rocks. As unlikely as it may seem, I believe the depression may be a relic wallow left over from the late Pleistocene. If that is the case, then its presence helps explain the rubbing rocks that encircle it. Contemporary rubbing rocks are typically associated with the bathing and grooming behavior of megafauna. For example, African elephants wallow at waterholes in order to coat themselves in mud, then, as the mud dries, they rub it off against a hard object, often a large boulder. This helps remove

## How to Volunteer for VIP Programs

Call the Stewards office at 869-9177 or email, [volparks@mcn.org](mailto:volparks@mcn.org)

### Program Activities

#### Armstrong Redwoods

Visitor Center Staffing  
Nature Walks  
School Program  
Trail Maintenance  
Habitat Restoration Project  
Pond Farm Interest Group

#### Sonoma Cst State Beach

Visitor Center Staffing  
Seal Watch  
Whale Watch  
Tidepool Programs  
Watershed Program  
Sonoma Coast Citizen Action Team

### Other Projects

Recycling & Firewood  
Office Help & Events

## Volunteer Program Coordinators

Joyce Bacci, ARVC  
Lanny Keyston, AR Trails, FAR  
Skaidra Smith-Heisters, AR Restoration  
Laura Parent, Pond Farm  
Linda Fisher Jenner VC  
Bob Caricato, Seal Watch  
Bea Brunn, Whale Watch  
John Cole, Recycling  
Vacant, Willow Creek Education  
Bill Bambrick, CAT  
The Sorensons, Marine Debris  
Bill Chambers, Tidepool Programs

## State Park Volunteer Coordinators

Ranger John Kolsrud, Armstrong/Austin Creek  
Ranger Jeff Mecchi, Sonoma Coast State Beach

## NEW MEMBERS

**Patron \$200 plus**

*James Goerlich*

**Business \$100**

*Jonathan & Suzanne Herr*

*CJ Farms*

**Supporting \$100**

*Robert & Joan Dickerson*

*B. Harvey & M. Houlihan*

*Lois Meli*

*Ramon & Anne Monge*

*Singles Outdoor Activities & Recreation (SOAR)*

*Robert Walsh*

**Contributing \$50**

*Renee Armstrong*

*Sheldon & Jeni Bachus*

*Mary Baker*

*Lorraine Bazan*

*Ronilee Clark & B. Arnold*

*Vern & Robin Drehmel*

*Mr. & Mrs. Neil Edwards*

*John Erla*

*The Gleeson Family*

*Marlys Green*

*Kathleen Haviland*

*D. LaMont & J. Robinson*

*Claudia Mudgett*

*Victor Rumsey*

## Family

*Scott Adams*

*Bev Balliett*

*Jayne Barrett*

*B. & E. Bullock-Wilson*

*Lynn Campanario*

*Janet & Alan Coleman*

*The DeKay-Bemis Family*

*D. Dillman & M. Redstone*

*Nancy & John Giambastiani*

*Kathy & Jim Gilliam*

*Chris & Raissa Hamilton*

*Hernandez Realty*

*Kimberly Hilsmann*

*Herbert Howe*

*Wally & Susan Jeffery*

*W. & L. Kahn*

*Scott & Darlene Kersnar*

*William & Esther Koolman*

*V. & M. Mackinnon*

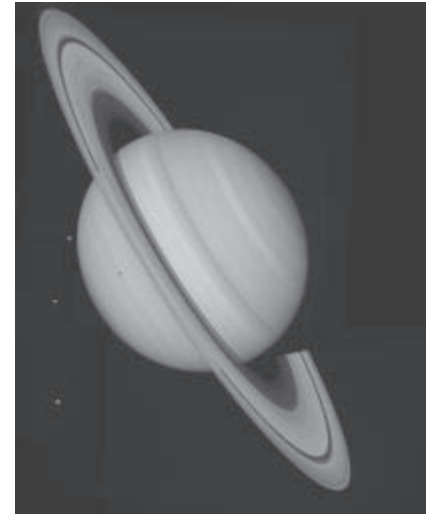
*Andrew & Barbara McCarthy*

*Thomas Novoryta*

## A TRIBUTE TO SATURN

*Ranger Jason Smith*

If you could find a big enough bathtub, Saturn would float in it. It is composed almost entirely of gases, from methane to ammonia, hydrogen, and helium. Saturn is the second largest planet and is best known for the ice and rocky debris forming ringlets that encircle it. Jupiter, Uranus, and Neptune all have rings but none that rival Saturn's. The planet is nearly 10 times larger in diameter than Earth and is named after the Roman god of agriculture. In volume, you could squeeze 95 Earths inside Saturn. While the Earth takes 365 days to complete an orbit around the sun, Saturn completes an orbit in 29 ½ Earth days. One full day is 24 hours here on Earth but only 10 ½ hours on Saturn. In fact, it spins so quickly for its size that the poles are flattened with the equator bulging out about 8,000 miles.



Saturn has 7 major rings with the outermost ring measuring 180,000 miles across. Each ring consists of tiny ringlets with debris range from dust size to about the size of a house. Besides all of the rings, Saturn has 25 satellites, or moons, that are at least 6 miles across.

The United States has sent several probes to Saturn from Pioneer in 1974, to Voyager 1 and 2 in the '80s to Cassini in late 2004. These spacecraft have revealed more secrets of Saturn like a radiation belt similar to Earth's, a magnetosphere (strong magnetic forces), two new rings, and several newly discovered moons.

With a moderate-sized telescope one can easily view Saturn, as well as numerous other planets like Venus, Mars, and Jupiter. Some of the information in this article was taken from NASA's website. For more questions and answers about Saturn and the United States' space program visit: [www.nasa.gov](http://www.nasa.gov). Thanks to Stewards, Rangers at Sonoma Coast State Beach have been able to develop audiovisual multimedia campfire programs about Saturn and the other planets in our solar system. These programs have routinely drawn the largest public audiences during our summer campfire program series. Contact Stewards for more dates and times of future programs.

## Mammoth Rocks

*Continued from page 5*

extoparasites from the animal's skin. Bison often use dry wallows for a similar purpose. I suspect that Ice Age mammoth and bison had similar practices to their modern-day counterparts. If so, then it seems probable that some of California's vernal pools began as animal wallows.

\*\*\*\*\*

To download the full text of Breck Parkman's sixteen page scientific article and references please visit the Stewards website. [www.stewardsofthecoastandredwoods.org](http://www.stewardsofthecoastandredwoods.org)

## New Program to Protect and Preserve the Mammoth Rocks

Stewards will be working during the next year to develop a new program to protect and preserve the Mammoth Rocks, or Sunset Rocks as some call them, on Sonoma Coast. The rocks are enjoyed by a diverse group of park users including hikers and rock climbers. Stewards would like to bring together all the users and work together to protect this amazing natural resource area from graffiti, theft, volunteer trails, and destruction of the lichen that grow on the rocks. Docents will also be trained to lead interpretive hikes to the rocks. Anyone interested should contact the Stewards office for more information.



### Volunteers Needed for the Jenner Visitor Center!

Enjoy spending time watching harbor seals, shorebirds, and river otters overlooking the Russian River estuary. Greet visitors from all over the world. On the job training provided. Contact Annie for more info.

### Office Volunteers Needed

Volunteer help is needed periodically in the Stewards office for mailings, stuffing volunteer packets, putting together manuals, and other mundane tasks. Treats provided. Call Diane for more information.

### Volunteer Coordinators Needed

Volunteer Coordinators are needed for the Tidepool Education Program and the Willow Creek Watershed Education Program. Contact Annie for details.

*For information on these and other volunteer opportunities call (707) 869-9177 or email [volparks@mcn.org](mailto:volparks@mcn.org).*



### Volunteers Needed to help with Recycling Program at Armstrong!

John Cole has been recycling at Armstrong for ten years and has helped raise over \$15,000 for Stewards through this effort. John is ready to transition this job to new volunteers. If you are interested in learning more about what is required please contact the Stewards office.



*Globe Lily*

### EARLY WILDFLOWER HIKE with docents Norman Hill & Joyce Bacci

**Saturday, March 11, 2006, 10 a.m. to 1:30 p.m.**

Meet in the East Parking Lot, next to the Stewards' Building. We will be hiking near the Picnic Area and on the lower Pool Ridge Trail; it will be moderately difficult, with one long, steep stretch. For those completing the hike bring water, lunch, and be ready to ford a creek several times.

### The Laguna Foundation

Become part of the Laguna restoration team and join us on **Saturday 1/21/06 from 9:00 am to noon.**

LagunaKeepers are helping to restore and plant at Gravenstein Creek. For further information or to be added to the mailing list, please contact Mary Abbott, [mary@lagunafoundation.org](mailto:mary@lagunafoundation.org). To learn more, visit: [www.lagunadesantarosa.org](http://www.lagunadesantarosa.org)

### LandPaths

Willow Creek Permit Orientations  
Call LandPaths (707) 524-9318 or email [willowcreek@landpaths.org](mailto:willowcreek@landpaths.org) for details and to sign up. Forms are available at [www.landpaths.org](http://www.landpaths.org).

SOME GIFTS CAN BE JUDGED BY THEIR COVERS

This holiday, give the gift of BAY NATURE for only \$15 per year!\*

Share your love of the natural world with the people you love!

\*Over 20% off the regular \$19 rate. Call (925)372-6002 or visit [www.baynature.com](http://www.baynature.com) to place your order

### Salt Point Visitor Center Volunteers Needed

For training date information contact Karen Broderick at [karen@mcn.org](mailto:karen@mcn.org).

### NEW MEMBERS Family - continued

- Laura & Robert Parent
- Richard Parker
- Dr. Douglas & Janice Pile
- Elaine Ramires
- Tonie Richardson
- Marilyn Schimdt
- Michele Sokol
- Lee Stratten
- Wendy Struhl
- R. Vance & D. Hansen
- George & Rosamond Warren
- Sheila & Dan Whipple

### Individual

- Christina Burch
- Frank Churchill
- Steve & Shelley Clarkson
- Shawn Combs
- Prudence & Lloyd Draper
- R. Ellinthorpe & F. O'Ryan
- Tammie Fraser
- Carol Grandy
- Gary & Anna Hansen
- Frederika Haskell
- Michael Jones
- Kathleen Juarez
- Alta Kavanaugh
- Kyle Omi Lehecka
- Christine Miller
- Ginger Moser
- George & Jean Noel
- Lilla Orr
- June & Joe Schwartz
- Larry Standley
- Anna Steinhauer
- Linda Swartz

### Seniors/Students

- Bruce Austensen
- Bodega Bay Community Assn.
- Sabrina Braham
- Reno Cervelli
- John Davenport
- Judith Ferrin
- Stuart Floyd
- L. Marvel Gardner
- Patricia Gilmore
- Col. Walter Grandjean
- Elisabeth Hawkins
- Gordon Heiner

*Continued Page 8*

## NEW MEMBERS

Continued from page 7

### Seniors

Christine Hoex

James Jorissen

Patricia Kohn

R. Knight & B. St. Louis

Adrian & Ann Mac Nab

Keith Marshall

Gaeta Stratton

R. Stringall & C. Jones

Francis Tracy

Glen Vadon Construction

John & Ann Walton

Jurgen Woelke

Stewards members receive this quarterly newsletter with information about Sector parks, special events for members and opportunities for volunteering. Members are also entitled to 10% discount on purchases at Stewards run visitor centers and at special events.

VIP docents earn annual day-use passes.

## Stewards of the Coast and Redwoods

### Membership Form

Renewal

**YES**, I'd like to become a member.

Senior/Student  \$20.00  
Individual  \$25.00  
Family  \$35.00  
Contributing  \$50.00  
Supporting  \$100.00  
Business  \$100.00  
Patron  \$200.00 plus  
Osprey Circle  \$500.00 plus

Name(s) \_\_\_\_\_

Address \_\_\_\_\_

Phone \_\_\_\_\_

Email \_\_\_\_\_

I'd like to help with an additional donation of \$\_\_\_\_\_

Payment type: Check  Charge Card  Visa  MC Total tax deductible donation \$\_\_\_\_\_

Make check payable to Stewards. Account # \_\_\_\_\_ Exp. Date \_\_\_\_\_

Annual Renewal Date: February 1 Signature: \_\_\_\_\_

Give a **GIFT MEMBERSHIP** to Stewards to a relative or friend.

## Bequests

### Your Gift to the Future of State Park Volunteerism

With your help future generations will enjoy quality interpretation through "Volunteers in Parks" programs for many years to come. A gift to Stewards is the simplest form of giving from your estate. There are several types of charitable bequests by will (or beneficiary designation).

#### Sample:

I hereby give and bequest to Stewards of the Coast and Redwoods, a nonprofit organization incorporated under the laws of the State of California, with a principal address at P.O. Box 2, Duncans Mills, CA 95430, \_\_\_\_\_ percent of my estate, (or) the sum of \_\_\_\_\_ dollars, (or) the following assets \_\_\_\_\_.

Contact your legal advisor for further information. There are also other planned giving options for your consideration. For information on contributing to Stewards' **Endowment for the Armstrong Restoration Project**, please contact Michele Luna at the Stewards office (707) 869-9177.

**CALL 800-320-0476 TO MAKE A  
VEHICLE DONATION IN THE  
NAME OF  
STEWARDS OF THE  
COAST AND REDWOODS**

NONPROFIT  
ORGANIZATION  
US Postage  
PAID  
Permit No. 6

## Stewards of the Coast and Redwoods

PO Box 2, Duncans Mills, CA 95430

(707) 869.9177, FAX (707) 869.8252

stewards@mcn.org, stewardsofthecoastandredwoods.org



Return Service Requested