

Stewards of the Coast and Redwoods

Preservation through Education and Restoration in
Russian River Sector State Parks

Volume XXI, Number 1, Spring 2004



Spring Naturalist Led Hikes

Wildflower and Coastal Photography Hike with Darlene LaMont

Thursday, April 8, 2004, 10 am - 1 pm

The hike will start at Shell beach and make a loop north to the mammoth rubbing rocks and a loop south to Furlong Gulch. Topic: wildflower & coastal photography, including close ups. Bring camera (digital or film), kneeler or ground cloth, tripod if possible, snack, water, reflector, binoculars. Wear synthetic pants (they stay warm even if wet) and rubber boots since the path is often quite wet in spring. Rain cancels.

Tidepool Photography Hike at Shell Beach with Darlene LaMont

Saturday, April 24, 2004, 8:30 - 10:30 am

Bring camera (digital or film), preferably with built-in flash in a water resistant fanny pack, small towel, lens cleaning equipment, hat, snack, water, binoculars. Wear synthetic pants, polar fleece jacket and rubber boots or hiking shoes that can get wet with synthetic socks. Be aware that you are putting your camera at risk. It will not survive dunking in salt water.

Spring Wildflower Hike to Gilliam Creek, Austin Creek SRA Led by Norman Hill

Saturday, May 1, 2004, 10 am to 4 pm

Meet at the entrance parking lot for Armstrong Redwoods State Reserve where carpooling will be arranged. The full loop will be moderate to difficult hiking, with several fordings of School House Creek. Bring lunch and water.

Contact Stewards (707) 865-0180 or stewards@mcn.org to pre-register for all hikes.

Continued on page 6



Trillium ovatum

Mission Statement

Stewards of the Coast and Redwoods (Stewards) works in partnership with California State Parks to protect and interpret the natural and cultural resources of the Russian River Sector of the North Bay District.

CA State Parks Supported

Armstrong Redwoods State Reserve/Austin Creek State Recreation Area
Sonoma Coast State Beach
Willow Creek Watershed

Stewards of the Coast and Redwoods

P.O. Box 2
Duncans Mills, CA 95430
707.865.0180
707.865.0190 FAX

State Park Advocacy Day March 22, 2004 in Sacramento

Meet your legislators and tell them how much *your* state parks contribute to California. Meetings with legislators will be scheduled in the morning and afternoon; we will gather at noon on the West Capitol steps for an inspiring rally with Huell Howser, creator, producer and host of KCET public television series, *California's Gold* and *California's Golden Parks*, acting as master of ceremony. Between 5pm and 6:30pm relax at a reception in the Capitol Basement where we will honor Senator Tom Torlakson and Assembly Member Fran Pavley for their efforts and dedication to *your* state parks. Please visit the California State Parks Foundation website at www.calparks.org for more information, and to let them know if you will be advocating for our parks on 3/22/04.

MARK YOUR CALENDARS

Fisherman's Festival, April 3-4, 2004, Bodega Bay
Tidepool Education Program Training
April 10, 2004, 9-4, Bodega Bay Grange
Armstrong Redwoods Volunteer Training
April 17, 2004, 9-3, Guerneville Library
Annual Golf Tournament
June 4, 2004, 11:30 am, Northwood Golf Course
Annual Duncans Mills Festival of Art and Wine & Duck Races
June 19 & 20, 2004, 10-6 Sat. & 10-5 Sun.

Call Stewards for details - (707) 865-0180

North Russian River Sector Volunteer Training
Salt Point Volunteer Training
March 20, 2004, 10am, lunch provided.
Salt Point Visitor Center, Call Karen, 847-3221
Fort Ross Cultural Heritage Day Vol. Training
3rd Saturday of the month, Call Sarah, 847-4777
Fort Ross Call House Volunteer Training
March 27, 2004, 10am, Call 847-3286

Board Members

Ann Chambers, President
Silva Diaz, Vice President
Leah Mahan, Secretary
Kathie Lowrey, Treasurer
Bill Bambrick
Jim Bray
Al Ciocatto
Rob Dickerson
Bill Dickinson
Tom Fujiyoshi
Joy Schaber

Executive Director

Michele Luna

Exec. Assistant

Annie Cresswell

Admin. Assistant

Emily Luna

CAL

Ranger Dave Horvitz

Newsletter Staff

Michele Luna

Joy Schaber, editing

Kathie Lowrey, editing

EXECUTIVE DIRECTOR'S MESSAGE

Michele Luna



What a wonderful surprise to return from my annual trip to our casita in Mexico to incredible warm weather here in Sonoma County. I left with the threat of flooding at our temporary office location in Jenner, which is why we moved into my dining room until the rains stopped. Despite this recent challenge, we are having a fabulous training season. Each training has been well attended and our new volunteers seem very dedicated and excited about supporting our efforts.

I want to thank our volunteer coordinators and other returning volunteers who have helped us train new volunteers. Everyone has been so wonderful and I believe new volunteers are enriched from learning from those who love the volunteer work they are doing in our State Parks.

I also want to thank my staff, Annie and Emily, who are doing an excellent job keeping up with the demands in the *Stewards* office. Despite not being able to fund a VIP Program Coordinator this year, we have divided up the job duties and each of us is accomplishing all that needs doing. Besides conducting trainings for each of our programs, we schedule all the guided tours for school and adult groups, keep our Nature Stores stocked with merchandise, take care of memberships, donations and provide support for all the special fund raising events that *Stewards* participants in.

In this issue of the newsletter you will see opportunities for going on hikes with knowledgeable naturalists. The lineup for this spring is especially interesting. We encourage you to come and bring your friends and family.

Also, we invite you to volunteer and/or come to the special events we are involved with to raise much needed funds to support our efforts to interpret, protect and preserve our state parks. Memberships are also currently due so if you haven't renewed yet, we hope you will soon.

Stewards would like to congratulate Ranger Dave Horvitz on his new assignment as Supervising Ranger at Armstrong Redwoods. We are very excited to be working with Dave in this capacity and look forward to a renewed relationship with all the Visitor Services staff at Armstrong.

By the time you receive the next issue of our newsletter we hope to be reporting that we have moved into our newly renovation office building at Armstrong Redwoods. We can't wait to invite you all to the grand opening to see our new offices as well as our new volunteer center, complete with a wonderful meeting room, kitchenette, inside restroom and lots of storage space.

Finally, I want to thank the *Stewards* Board of Directors for allowing me to use my accumulated vacation time for two separate vacations this year. Besides the trip I just took to Mexico, my husband and I are very fortunate to be also traveling to Europe for the first time to visit our son, who is going to school in London, and also to visit Paris and Italy, where we will meet my Italian relatives for the first time. We are very much looking forward to this adventure. I will be back in time for the Tidepool Education program training on April 10th.

Shopping at our Nature Stores

There are Nature Stores in each of our Visitor Centers, which have wonderful educational gift items.

Armstrong VC is open 7 days a week from 11-3. 869-2958

Jenner VC is open weekends from about 11-3. Call ahead to make sure. 865-9757.

**10% discount for members.
Thanks for your support!!**



2003 YEAR END FINANCES

Revenue \$174,810

Expenses \$216,681

Deficit was covered by restricted grants carried over from 2002.

Assets

Unrestricted \$48,004

Restricted \$84,873

Expense breakdown: 80% Program 11% Administration 9% Fundraising

CAL REPORT

Dave Horvitz, Cooperating Association Liaison

Seems like just a few days ago it was fall and now here we are with spring quickly approaching. Many positive changes have occurred. I am optimistic that the Russian River Sector staff and volunteers will have a great summer.

Several noteworthy items since the winter newsletter have developed. The Friends of Armstrong Redwoods (FAR) volunteer group is becoming active again. Armstrong Redwoods has a number of different types of volunteers providing service through many diverse capacities. Trail, restoration, visitor center, interpretive, and resource volunteers can all be found within Armstrong and Austin Creek.

FAR, is a loose knit group that can assist in coordinating projects and addressing the concerns of volunteers at Armstrong Redwoods. This will be a great asset for the park, volunteers and visitors.

The Jenner Visitor Center, while coming close to flooding several times over the past few months, has stayed dry. Much time has been spent watching the water level and moving items to higher ground. After the last move, when water was splashing over the deck and mergansers and cormorants were almost at window level, Michele Luna decided to move the *Stewards* office into her home and wait for the rains to pass. This alleviated the flooding concern. On the positive side the high water provided easy bird watching and we have become expert movers.

The Armstrong Supervising Ranger position was filled at the beginning of March. This position, vacant since last winter, left a gap in the supervisory and facilitative functions at Armstrong, while adding to the workload of Rangers Tracy Becker and John Kolsrud. Hopefully, Tracey and John are looking forward to the change since I am the lucky ranger chosen to fill the position. Initially my schedule will be erratic while I attend several trainings. I hope to achieve a routine schedule in April so I can begin concentrating on the fun job at Armstrong.

Wildflowers and migrating birds will soon be arriving in vast numbers in our area. There is much to see along the coast and in the redwoods. If you are looking for something new and find the drive to the desert too much of a commitment, a short drive inland will take you to an incredibly different habitat. Head to Mt. Diablo State Park for a new experience involving a plethora of spectacular flowers, birds and butterflies. This park, with many trails and about 60 campsites, has its' wildflower peak in the spring. Many hikers enjoy the Mitchell Canyon area or north side of the mountain. After a rain, when the weather is clear, a trip to the summit provides views touted as one of best in the world based on the amount of landmass you can see, about 40,000 square miles. For more information visit the State Park website at www.parks.ca.gov, or call (925) 837-2525.

Volunteer opportunities exist at both the Sonoma Coast and Armstrong Redwoods. Seal and Whale Watch, tidepools, visitor center operations, restoration, trail maintenance and more are all possibilities in addition to becoming involved in numerous special events and fundraising activities. Call the *Stewards* office at (707) 865-0180 or log on to the *Stewards* website www.stewardsofthecoastandredwoods.org for details. You will be welcome in any capacity.

A Heartfelt Farewell to Bill Lipton

Longtime volunteer Bill Lipton passed away at the end of 2003 from a sudden illness. Bill and his wife Shirley volunteered for many years at Armstrong Redwoods. They both were active in FAR and volunteered regularly in the Visitor Center. Bill also will be fondly remembered for working with Keith Nelson to build the beautiful interpretive panels in the Visitor Center. Bill constructed the wooden frames for the panels. A private memorial service will be held at the park in April. Bill's name will be placed on the memorial plaque in the Armstrong Visitor Center. We send our blessings to Shirley and Bill's family.



Bill Lipton on the ladder and Russ Whitman working on the deck roof at the Armstrong VC in about 1993.

WISH LIST

*Carpeting for the Jenner
Visitor Center
Spotting Scopes
Tripods
Binoculars
Laptop Computer
Data Projector
Digital Camera
Digital Video Camera
Water Quality Monitoring
Meters & supplies*

RAFFLE PRIZES & SPONSORS NEEDED

*Raffle prizes are needed for the following events:
Golf Tournament
Duncans Mills Festival of Art and Wine
Annual Raffle
Hike, Paddle & Ride for State Parks*

DONORS

Foundations

American Rivers/NOAA
City of Santa Rosa
FishAmerica/NOAA
Restoration Program
Fisherman's Festival
Allocation Committee
Russian River Watershed
Project - Prop. 13
Sonoma County
Community Foundation
California State Parks
Foundation
Medtronic Foundation
Nat'l Fish and Wildlife Fnd.
Project Aware

Corporations

ChevronTexaco
Mendocino Redwood Co.
Santa Rosa Community
Market
Pacific Gas and Electric
Summit State Bank

Individuals

\$500 or more
Joan Bacci
Laura Morgan
Timothy Temple

THAR SHE BLOWS!!

Norma Jellison, Whale Watch volunteer

It's that time of year again - the migration of the Pacific Gray Whales past our Sonoma Coast. The Whale Watch folks are out every weekend at Bodega Head from Noon to 4 PM (weather permitting) to talk to folks about the incredible migration of these leviathans of the ocean. And of course, to help visitors see the whales. That is where the "Thar She Blows" comes in, for first we see the blow - a bushy, heart shaped affair when viewed close up, as the whale surfaces to breathe. Then, we can pinpoint them in our binoculars to catch a glimpse of their back and maybe a tail, as they surface and dive.



Whale Watch starts in January, when the Gray whales are headed south from their feeding grounds in the frigid waters of the Bering, Chukchi and Beaufort Seas in the Arctic Ocean near Alaska to the subtropical waters of the lagoons and bays of Baja California to mate and have their calves. A vast majority of the whales go to the lagoons and bays on the Pacific (west) side of Baja. A few do round the tip of Baja, past Cabo San Lucas, and head into the Sea of Cortez. This can be a 6,000 - 8,000 mile journey - one way!

Actually, the pregnant females are already down there or close, when we begin Whale Watch, as the majority of the calves are born in late January/early February. The gestation period is about 13 months. Female Gray whales give birth to one calf, which weighs in at 1500 to 2000 pounds and is about 15 feet long. This season, the LA American Cetacean Society, which has been keeping records of the Pacific Gray Whale migration for 10 years, spotted 48 cow/calf pairs headed south. That's the second highest southbound cow/calf count in their data base - quite a large number to be born in the ocean on the way south, rather than at the warmer, protected lagoons of Baja.

Along about the middle of February, we begin to see whales going both south and north! This is one phenomenon we local Whale Watchers can attest to, as we have our notes over the past 18 years. We do not otherwise census or keep records per se as we are only at the Head on weekends for a few hours. Our role is more education and assisting the public in spotting a whale.

The northbound whales in February are predominantly the newly pregnant females. Getting pregnant on the southbound migration or in the mating/calving lagoons in Baja, they are now hightailing it to Alaska, to be there as soon as the ice begins to break up. They will now be feeding for two, after living off their blubber stores for the southbound migration and during their stay in Baja. Gray whales mostly do not feed during migration. They may feed opportunistically, if they come upon a krill bloom or anchovies. However, as they are predominantly bottom feeders, the majority of their feeding is done in the relatively shallow, but amphipod rich bottom sediments of their summer feeding grounds in Alaska.

The southbound whales we see in February are juveniles. They tend to lag behind in the migration, and often do not go all the way to Baja, as they are not yet sexually mature. February is a fun month on the Head, as we try to figure out what direction the whales we are seeing are going in and, if they are close enough in, if we can tell if they are adults or juveniles by their size. Juveniles have been known to turn around and head north as they encounter the northbound migration.

Later in February and March, the northbound migration picks up and larger numbers of Grays pass by each weekend, swimming steadily north focused on FOOD! Not eating for months while swimming, mating, and breaching and otherwise "playing" around in Baja takes its toll on their girth. Gray whales lose up to 30 percent of their body weight during the roundtrip migration. An adult Gray whale averages 45 feet in length, although females are larger than males and can be 55'. They weigh on average 45 tons. Mother whale feeds her calf 50 gallons of incredibly rich milk a day - while not eating!

Photo by Darlene LaMont

On the northbound migration, the whales tend to be even closer in to shore, allowing us better sightings than on the southbound migration. Although the Gray whale does not really travel in pods as Orcas and other marine mammals do, we often will see groupings of whales on the northbound trip. Individuals surface and blow and dive and surface again, putting on quite a show, and eliciting many oohs and ahhs and even rounds of applause.

In April, we begin to see the cow/calf pairs headed north. Whale Watch is not at the Head on Fish Fest or Easter weekends, but the whales continue to stream past. The cow/calf pairs are the last to head north, as the calves have been nursing in the lagoons of Baja, gaining weight and strength. In San Ignacio - "the friendlies" - Lagoon, a mother whale may push her baby up to the boat, so you can touch it. Other days, mom cuts off attempts by her calf to approach the boat, nudging it on its swim regimen. Calves must build up enough stamina and swimming ability to take a first journey north, just a few months after birth. Mother Gray whale and calf hug the coast quite closely on their northbound trip. The calf needs to rest often, the cow is still nursing the calf and, keeping the calf between her and the coastline, helps protect it from the eco-location finding capabilities of their only serious predator, the Orca.

The most amazing sightings from the Head are the cow/calf pairs. They will often stop on the jetty side of the Head to rest and nurse and/or come slowly past the tip of the Head to Horseshoe Cove at a leisurely pace. What a delight to see the cow/calf pairs so close up you can see their barnacles. It is the ever present barnacles that give the Gray whale its mottled look. They swim so slowly (3-5mph) that the water velocity cannot knock off the barnacles, which are along for the ride feeding in the water column as the whale dives. The barnacles are specific to the Gray whale, as are the lice that live around the barnacles.

There is much more I could tell you about our beloved Pacific Gray whales. Or, you could come up to Bodega Head some weekend, see our display, talk to the volunteers about the Gray whale migration and, if you are patient and lucky, see a whale spout or two!

WHALE WATCH

Bea Brunn, Whale Mother

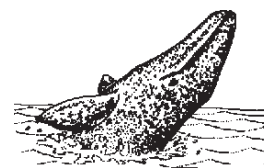
Whale Watch season 2004 is well underway with many eager and enthusiastic volunteers. As usual with our southward migration we have had some good days and some not so good, both with regards to the whale sightings and the weather.

We also had our annual visit from Ruby Herrick with her delicious whale cookies complete with whale lice. This is now a tradition - thanks Ruby for remembering us.

Although the whale sightings have been spotty we also have had fun watching our "teenagers" who just do not read the same books that we do and who are happy showing off swimming south, north and in circles just to entertain us.

On Sunday February 22 we had our first confirmed sightings of the northward migration including a breaching, so we are now looking forward to the best part of our season with lots of whales.

Please come and join us at Bodega Head any Saturday or Sunday to view this spectacular display.



How to Volunteer for VIP Programs

Call the Stewards office at 865-0180 or email, volparks@mcn.org

Program Activities

Armstrong Redwoods

Visitor Center Staffing

Nature Walks

School Programs

Trail Maintenance

Habitat Restoration Project

Pond Farm Interest Group

Sonoma Cst State Beach

Visitor Center Staffing

Seal Watch

Whale Watch

Tidepool Programs

Watershed Programs

Other Projects

Recycling & Firewood

Office Help & Events

Volunteer Program Coordinators

Joyce Bacci, ARVC

Lanny Keyston, AR Trails

Skaidra Smith-Heisters,

AR Restoration

Laura Parent, Pond Farm

VACANT, Jenner VC

Bob Caricato, Seal Watch

Bea Brunn, Whale Watch

John Cole, Recycling

Ginny LaVine Barrera,

Willow Creek Education

Rob Dickerson, CAT

The Sorensons, Marine Debris

Sandy Horn, Tidepool Prog.

VACANT, Tidepool Roving

State Park Volunteer Coordinators

Ranger John Kolsrud,

Armstrong/Austin Creek

Ranger Jason Smith,

Sonoma Coast State Beach

NEW MEMBERS IN 2004

Special Gifts \$500

Business \$100

Bill Crane
Fred Euphrat

Supporting \$100

Contributing \$50

Barbara Biebush
Charles and Elvira Lavell
Herbert & Gloria
Leiderman
Mr. & Mrs. Paul Schoch

Family

Mary Abbott
Michael & Claudia Berger
Diane and Michael Caruana
Marilyn Cannon & Leslie
Markham
Susan and Tiburcio
Gonzalez
Ayrís Hatton
Anne Hill
Don & Marilyn Hoard
Susan Miranda
Nadenia Newkirk
Joel & Phil Slaton
Ted & Nancy Waldman

Individual

Sharon Curry
Tom Banks
Anthony Copioli
Bill Gottlieb
Carol Hart
Helen Meistrich
Richard & Jennifer Palmer
Diana & Roger Rhoten
Kathryn Swafford
Roland & Adam Wiebe
Katherine Wylie

ARMSTRONG REDWOODS STATE RESERVE & AUSTIN CREEK STATE RECREATION AREA

"Valentines Day Volunteers Show their Love for Armstrong Grove"

Skaidra Smith-Heisters, State Parks Intern



This February 14 an intrepid group of volunteers braved gray skies to lend a hand in the restoration of Armstrong Grove. It was a great turnout, with a good mix of expert long-time volunteers and enthusiastic first-timers of all ages among the thirty participants. Our Valentines Day volunteers' positive attitudes were rewarded with a few hours of sunshine as they worked up a sweat planting maples, bays, and redwoods along the upper fork of Fife Creek and pulling invasive broom and blackberry from the creek and hillside. The sixty trees planted along the creek will grow to provide shade, bank stabilization, and otherwise enhanced habitat for native species along the stream corridor. The new trees were given a generous watering thanks to several inches of rain in the days following the planting day and are off to a good start.

A group of seasoned Grove stewards and Boy Scouts also did an excellent job surveying seedlings planted throughout the grove in past years and removing the plastic yellow sleeves from established trees. Data from the survey showed a high rate of seedling survivorship. This effort marks one of the final phases of this part of the restoration project at Armstrong Grove.

The volunteer crew that worked to pull out invasive broom from the slopes above Fife Creek was especially impressive. By the end of the day these adventurous folks had earned the nickname "Billy goats" for their skill and determination on the slopes. Jim Wolk was the last to quit. As the rest of the volunteers gathered up tools and rubbed the dirt from their gloves after the afternoon's work, he could still be heard off in the bushes calling, "Just one more! I just have to get this last one, and then we can go..."

Thanks to the many folks that helped make February's volunteer day a success.

MORE NATURALIST LED HIKES

Wildflower Hike with Joyce Bacci and Keith Nelson

Saturday, May 15, 2004, 10 am to 1:30 pm

Hike the Pomo Trail, meet at Shell beach at 10am, hike to Pomo campground and return. Coastal and redwood ecosystems with great views and wildflowers. Approximately 6 1/2 miles. Bring a lunch and water.

Kortum Trail with Joyce Bacci and Keith Nelson

Saturday, June 19, 2004, 10 am to 1 pm

Meet at the upper parking area on the road to Wrights Beach campground at 10am, hike to Peaked Hill (near the Blind Beach parking lot) and return. See two mammoth rubbing sites, and many wildflowers. Approx. 6 miles. Bring a lunch and



Keith Nelson's Shoreline and Tidepool Explorations

Meet at the Salt Point State Park's Gerstle Cove Visitor Center.

Sunday, April 11, 2004, 10-12

Sunday, April 25, 2004, 9-11

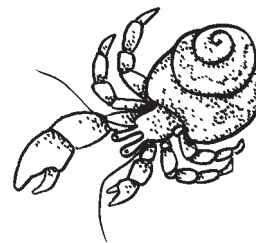
Sunday, May 9, 2004, 9-11

Sunday, May 23, 2004, 9-11

Sunday, June 6, 2004, 9-11

Sunday, June 20, 2004, 8-10

Monday, July 5, 2004, 9-11



Hermit Crab

4TH ANNUAL GOLF TOURNAMENT TO BE HELD JUNE 4th

The 4th annual **STEWARDS GOLF TOURNAMENT** will be held at the Northwood Golf Course on Friday, the 4th of June starting at 11:30 am with registration and check-in. Lunch and raffle will be at 12 noon with a 1 pm shotgun start for the tournament—Wine, gifts, SF Giant tickets and much more will be raffled off during the lunch.

Last year the tournament raised over \$3300 to help with Stewards Programs

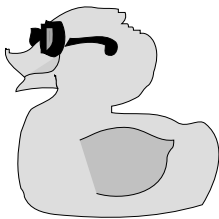
Those of you who participated last year will receive an entry form in the mail this spring. Join us again this year and bring a friend. You don't have to be a good golfer to participate. It is a good way to have an afternoon of fun and help Stewards with all the great work they are doing. Any questions, call Bill Dickinson at 525-1459.



20th Annual Duncans Mills Festival of Art and Wine , Rubber Duck Races, & New Kids Zone

June 19 and 20, 2004

10 am to 6 pm on Saturday and 10 am to 5 pm on Sunday



This great event has something for the entire family. Top quality art and fine crafts, wonderful wine and microbrew tasting, delicious food and the notorious Rubber Duck Races. The grand prize for the duck race will again be a Softub. Also this year Stewards is putting together a Kids Zone with games and prizes. Volunteer opportunities are available for free admission. Stewards is the beneficiary of this event so we appreciate you spreading the word. Call Stewards at (707) 865-0180.

WILLOWSIDE MIDDLE SCHOOL SERVICE LEARNING PROJECT

What a surprise we had at the recent Watershed Training when we viewed for the first time the video DVD made for us by the students at Willowside Middle School in Santa Rosa! Last fall Justin Kornfein, their teacher, talked to Michele Luna about doing a service learning project for Stewards. Michele visited the class and asked them if they would like to put together a video of our watershed program that could be used for volunteer recruitment and training and fundraising purposes. The students were very excited about the project and began filming in the fall of 2003. They filmed the classroom visit, interviews with volunteers Jim Bray, Norman Hill, Ginny LaVine Barrera and Carol Vellutini, and then filmed their field visit to Willow Creek. Early this year Michele again visited them when they filmed an interview with her. The students ended up with 4 hours of video footage that they edited down to about 15 minutes. The video is absolutely wonderful. After they make a few edits we will have a copy for our use. Those who were lucky to be at the premier showing had tears in their eyes at the end. The students will be showcasing their project at Watershed Day in May at Salmon Creek school. Our sincere thanks to Justin Kornfein and his students for an inspirational project that will be used by Stewards for years to come.



Seniors/Students

Sandy Bush
Valerie Byrd
Linda Fisher
Rosalyn Hendy
Thelma Jorgensen
Mert Preston
Gloria Joan Rogers
Barry Stinemates
Loralyn Wagner
Elaine Welke

COMMUNITY SMART PROGRAM

COMMUNITYsmart™- A fabulous way for you to help Stewards of the Coast and Redwoods. Obtain a COMMUNITYsmart™ Loyalty Card and use it at participating local merchants to generate cash donations for Stewards. Visit the website: www.communitysmart.com for details.



Stewards members receive this quarterly newsletter with information about Sector parks, special events for members and opportunities for volunteering. Members are also entitled to discounts on purchases at Stewards run visitor centers and at special events.

VIP volunteers earn annual day-use passes.

Give a **GIFT MEMBERSHIP** to Stewards to a relative or friend.

Stewards of the Coast and Redwoods

Membership Form

Renewal

YES, I'd like to become a member.

- Senior/Student \$15.00
 Individual \$20.00
 Family \$25.00
 Contributing \$50.00
 Supporting \$100.00
 Business \$100.00
 Patron \$200.00 plus
 Special Gift \$500.00 plus

Name(s) _____

Address _____

Phone _____

Email _____

I'd like to help with an additional donation of \$_____

Payment type: Check Charge Card Visa MC Total tax deductible donation \$_____

Make check payable to Stewards. Account # _____ Exp. Date _____

Annual Renewal Date: February 1 Signature: _____

Bequests

Your Gift to the Future of State Park Volunteerism

With your help future generations will enjoy quality interpretation through "Volunteers in Parks" programs for many years to come. A gift to Stewards is the simplest form of giving from your estate. There are several types of charitable bequests by will (or beneficiary designation).

Sample:

I hereby give and bequest to Stewards of the Coast and Redwoods, a nonprofit organization incorporated under the laws of the State of California, with a principal address at P.O. Box 221, Duncans Mills, CA 95430, _____ percent of my estate, (or) the sum of _____ dollars, (or) the following assets _____.

Contact your legal advisor for further information. There are also other planned giving options for your consideration. For Information on contributing to Stewards' **Endowment for the Armstrong Restoration Project** please contact Michele Luna at the Stewards Office (707) 869-9177.

**CALL 800-320-0476 TO MAKE A
 VEHICLE DONATION IN THE
 NAME OF
 STEWARDS OF SLAVIANKA
 (USE OUR OLD NAME)**

Stewards of the Coast and Redwoods

PO Box 221, Duncans Mills, CA 95430

(707) 865-0180, FAX (707) 865-0190

stewards@mcn.org, stewardsofthecoastandredwoods.org



Return Service Requested

NONPROFIT
 ORGANIZATION
 US Postage
 PAID
 Permit No. 6